

# 4527A

## REACH MORE MORE REACH

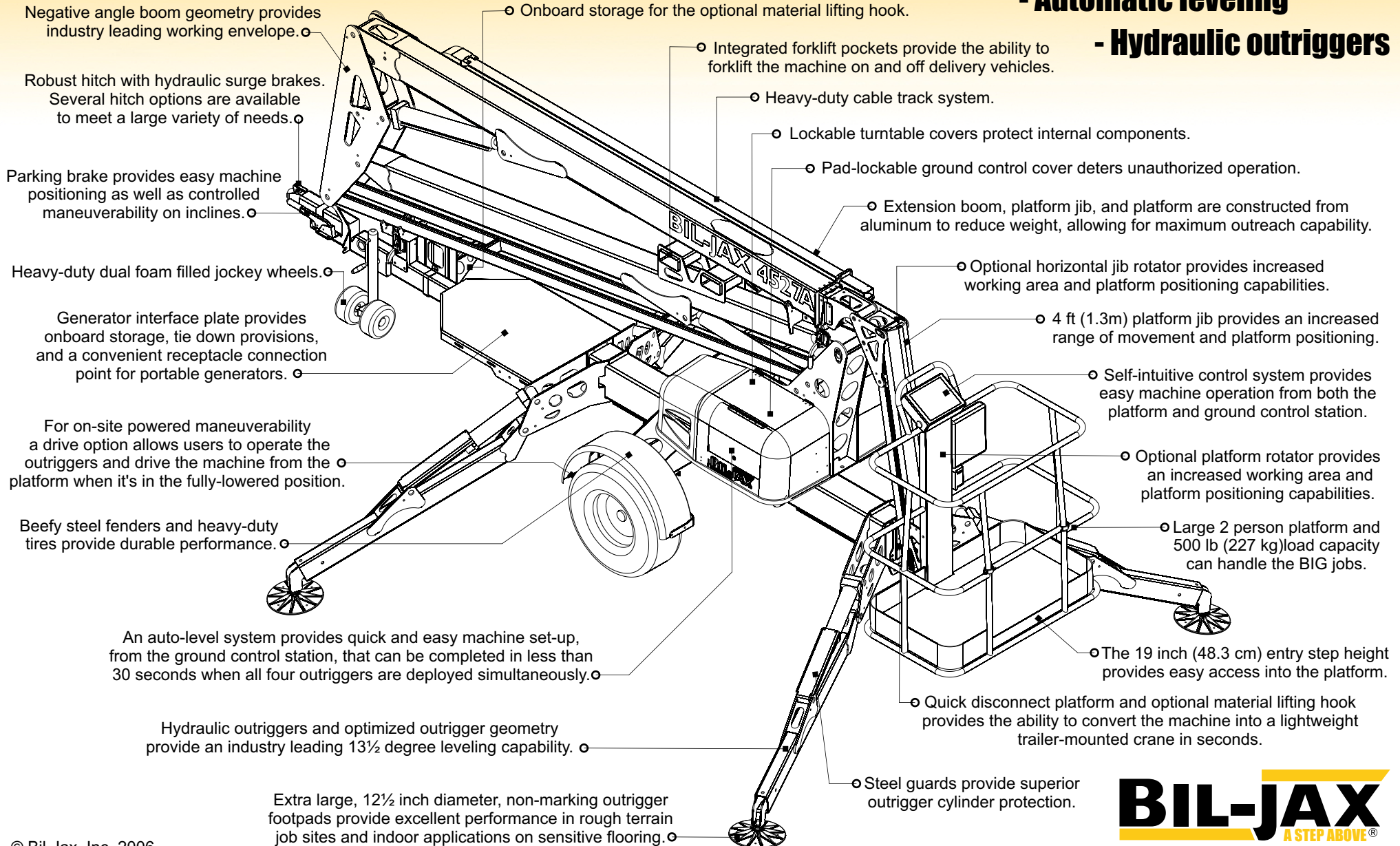
**- 51 ft working height**

**- 27 ft maximum outreach**

**- Platform jib + boom extension**

**- Automatic leveling**

**- Hydraulic outriggers**



# BIL-JAX 4527A

## Automatic Leveling System

A self-leveling system provides quick and easy set-up in less than 30 seconds.

## Hydraulic Outriggers

Optimized outrigger geometry provides industry leading leveling capability.

## Working Envelope and Outreach

The articulating boom design features an upper telescopic extension boom that can be positioned at a negative angle and a platform jib providing exceptional reach, working envelope, and platform positioning capability.

## Easy to Use

Both the platform and ground control station feature an easy-to-understand display panel with control buttons that are logically positioned around a single machine image for easy identification of button functions.

## Versatile

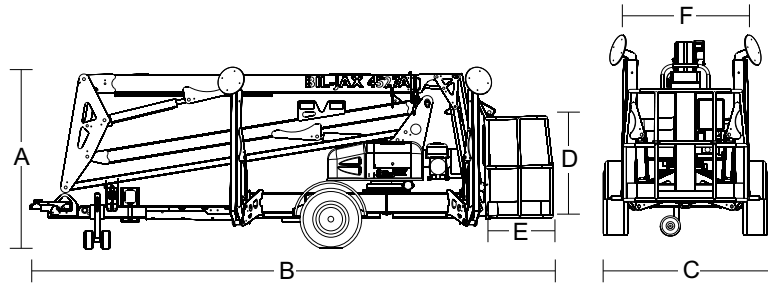
A quick-disconnect platform and optional Material Lifting System provides the ability to convert the machine into a light duty crane.

## Easy to Transport

The boom is easily towed with a Class 3 hitch. Convenient integrated forklift pockets are also provided.

## Standard Features

- 51 ft (15.7 m) maximum working height
- 27 ft (8.2 m) working outreach
- 500 lb (227 kg) lift capacity
- Extension boom and platform jib
- Outrigger interlocks and tilt alarm/sensor
- Automatic leveling hydraulic outriggers
- Multiple control function speeds
- Self-leveling platform
- 110/60 GFI outlet in platform
- Surge and parking brakes
- Hour meter
- 12½-inch diameter non-marking footpads
- Heavy-duty 2-inch ball hitch



## Product Specifications

	US	Metric
Working height <sup>1</sup>	51 ft	15.7 m
Maximum platform height <sup>2</sup>	45 ft	13.7 m
Horizontal outreach		
Maximum (from centerline)	27 ft	8.2 m
Maximum (from edge of footpad)	21 ft	6.4 m
Up and over height	20 ft 9 in	6.3 m
Turntable rotation	700° non-continuous	
Load capacity	500 lbs	227 kg
(A) Height - stowed	76 3/4 in	195 cm
(B) Length - stowed	19 ft 6 in	5.9 m
(C) Width - stowed	5 ft 5 1/2 in	166 cm
(D) Height - platform	43 in	109 cm
(E) Length - platform	30 in	76 cm
(F) Width - platform	48 in	122 cm
Platform rotation (optional)	90° / manual	
Jib length	4 ft 3 in	1.3 m
Jib vertical motion	150° (+70 / -80)	
Jib rotation (optional)	180° / hydraulic	
Outrigger type	Hydraulic	
Leveling system	Auto Leveling	
Leveling capability	13 1/2°	
Outrigger footprint - length	12 ft 4 in	3.8 m
Outrigger footprint - width	11 ft 4 in	3.5 m
Footpad diameter	12 1/2 in	32 cm
Tow speed rating	65 mph	105 km/h
Tongue weight	170 lbs	77 kg
Overrun brakes	Standard	
Parking brake	Standard	
Tire size	ST 225/75 R15D	
Standard control system	24V DC	
Batteries	4 x 6V 245 amp-hr	
Charger	40 amp	
Total weight <sup>3</sup>	3,880 lbs	1,760 kg

<sup>1</sup> The metric equivalent of working height adds 2 m to the maximum platform height.

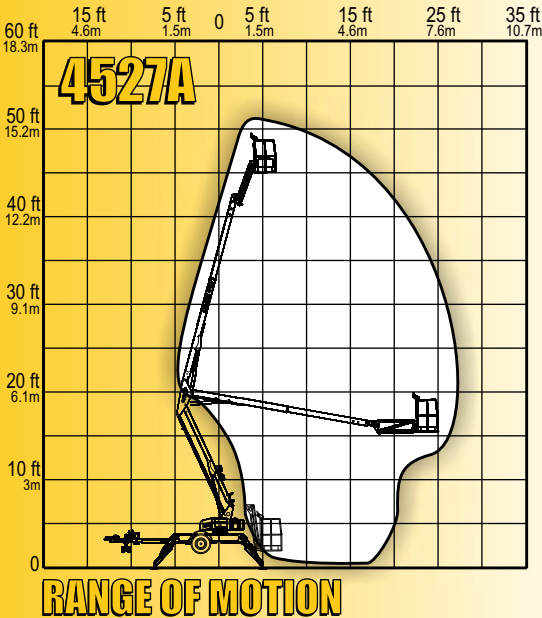
U.S. adds 6 ft to the maximum platform height.

<sup>2</sup> Maximum platform height when outriggers are fully extended on a level surface.

<sup>3</sup> Weight will vary depending on options and/or market destination.

## Options:

- Material lifting system
- DC/Gas hybrid
- Drive and set
- Platform rotation
- Jib rotation
- Air line to platform
- Water line to platform
- Spare tire & wheel
- Tool tray
- Adjustable height combination hitch
- Various combination hitch couplers
- Custom colors



**BIL-JAX** TRAILER-MOUNTED  
A STEP ABOVE® **BOOMS**

Brought to you by: **Robert's Diesel Works Inc.**  
407-246-1597 or 800-341-1370 Email [RDWI@KnuckleBoom.Com](mailto:RDWI@KnuckleBoom.Com)